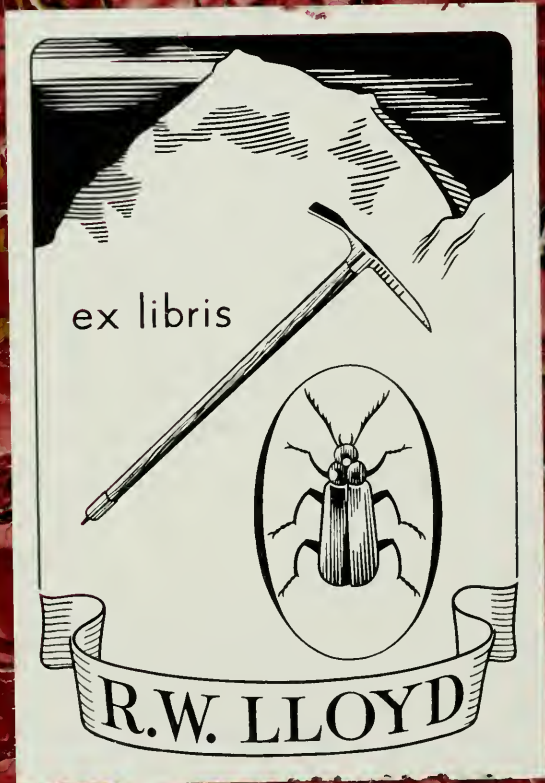


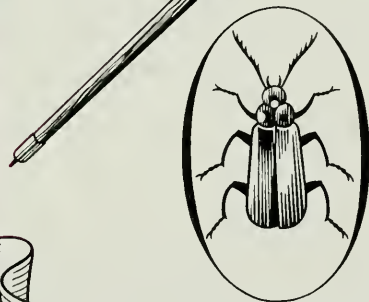
5/6/1893

to

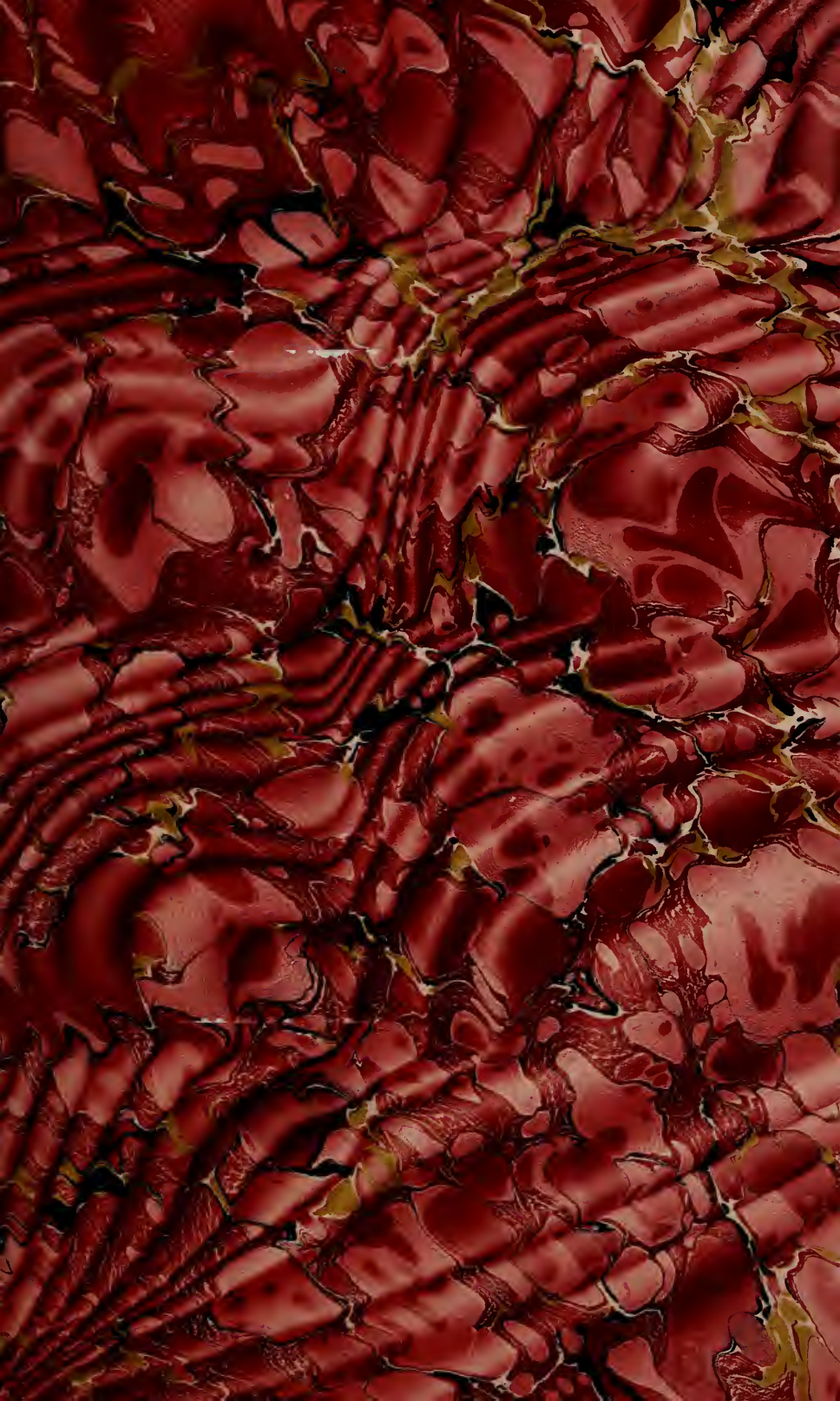
12/16/1893



ex libris



R.W. LLOYD



CATALOGUE

OF

HIGHLY IMPORTANT

ANCIENT AND MODERN

PICTURES,

THE PROPERTY OF

THE RT. HON. LORD REVELSTOKE;

THE HON. FRANCIS BARING;

AND

J. STEWART HODGSON, ESQ.:

WHICH

Will be Sold by Auction by

MESSRS. CHRISTIE, MANSON & WOODS,

AT THEIR GREAT ROOMS,

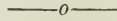
8 KING STREET, ST. JAMES'S SQUARE,

On SATURDAY, JUNE 3, 1893,

AT ONE O'CLOCK PRECISELY.

May be viewed Three Days preceding, and Catalogues had,
at Messrs. CHRISTIE, MANSON and Woods' Offices, 8, King Street,
St. James's Square, S.W. LUSI 219

CONDITIONS OF SALE.



- I THE highest Bidder to be the Buyer; and if any dispute arise between two or more Bidders, the Lot so in dispute shall be immediately put up again and re-sold.
- II. No person to advance less than 1s.; above Five Pounds, 5s. and so on in proportion.
- III. In the case of Lots upon which there is a reserve, the Auctioneer shall have the right to bid on behalf of the Seller.
- IV. The Purchasers to give in their Names and Places of Abode, and to pay down 5s. in the Pound, or more, in part of payment, or the whole of the Purchase-Money, *if required*; in default of which, the Lot or Lots so purchased to be immediately put up again and re-sold.
- V The Lots to be taken away and paid for, whether genuine and authentic or not, with all faults and errors of description, at the Buyer's expense and risk, within Two days from the Sale; Messrs. CHRISTIE, MANSON and WOODS not being responsible for the correct description, genuineness, or authenticity of, or any fault or defect in, any Lot; and making no warranty whatever.
- VI. To prevent inaccuracy in delivery, and inconvenience in the settlement of the purchases, no Lot can on any account be removed during the time of Sale; and the remainder of the Purchase-Money must absolutely be paid on delivery.
- VII. Upon failure of complying with the above Conditions, the Money deposited in part of payment shall be forfeited; all Lots un-cleared within the time aforesaid shall be re-sold by public or private Sale, and the deficiency (if any) attending such re-sale shall be made good by the Defaulter at this Sale.

CATALOGUE.

—o:~o:~o—
ON SATURDAY, JUNE 3, 1893,

AT ONE O'CLOCK PRECISELY
—o:~o:~o—

*The following are
the Property of The Hon. FRANCIS BARING.*

WATER-COLOUR DRAWINGS.

J. M. W. TURNER, R.A.

30 1 THE FALLS OF THE TEES, Yorkshire

11 in. by 15½ in.

From the Bale Collection £1270

*Engraved by E. Goodall, and published in the 'England
and Wales' Series*

Turner

PICTURES.

E. W. COOKE, R.A.

35- 2 FISHING-BOATS ASHORE

25½ in. by 37½ in.

From the Earl of Wharncliffe's Collection

Philpot

T. CRESWICK, R.A., AND W. P. FRITH, R.A.

4-3- 3 THE FOREST FARM, with figures by W. P. FRITH, R.A.

26½ in. by 35½ in.

From the Heugh Collection 450 f.

Young

W. MULLER, 1843.

4 CHILDREN FISHING, Gillingham

22½ in. by 16½ in.

JULES BRETON, 1867.

400 5 A BRITTANY SHEPHERDESS

23 in. by 17 in.

PORTRAITS.

65- { 8 THE ARCHDUKE ALBERT, married the Infanta Isabella

77 in. by 40 in. } Radcl

9 THE ARCHDUCHESS ISABELLA CLARA EUGENIA,

Governess of the Low Countries—*whole length*

77 in. by 40 in.

MIGNARD.

40 10 PORTRAIT OF CARDINAL MAZARIN

25½ in. by 20½ in.

From the Hamilton Palace Collection £40 Deprey

A. BRONZINO.

145- 11 LEONORA DE TOLEDO, DUCHESS OF FLORENCE, wife
of Cosmo de Medici, died 1562—*Vide Vasari* R. Colnago

34 in. by 26 in.

From the Hamilton Palace Collection (No. 756) £430

*The following are
the Property of J. STEWART HODGSON, Esq.*

PICTURES.

W. GALE, 1861.

14 12 HEAD OF AN EASTERN CHILD
4½ in. by 4 in.

Gooden

J. B. BURGESS, R.A.

31 13 STERN DUTY
12 in. by 10 in.

Schenhaus

C. W. COPE, R.A.

9 14 OTHELLO AND DESDEMONA
6 in. by 8 in.
A sketch for the large Picture

W. C. T. DOBSON, R.A.

32 15 TWO GIRLS IN A WOOD
26½ in. by 22 in.
Exhibited at the Royal Academy, 1859

Polak (13)

J. D. HARDING, 1859.

31 16 THE MATTERHORN
21¼ in. by 16 in.

M. Leau

SIR FREDERICK LEIGHTON, P.R.A.

42 17 HEAD OF AN ASIATIC

18 in. by 15 in.

*From the Collection of B. G. Windus, Esq.**Graves*

D. G. ROSSETTI.

/ 01 18 DR. JOHNSON AND HIS LADY DISCIPLES AT THE MITRE TAVERN

"Two young women from Staffordshire visited him, when I (Dr. Maxwell) was present, to consult him on the subject of Methodism, to which they were inclined. 'Come,' said he, 'you pretty fools; dine with Dr. Maxwell and me at the Mitre, and we can talk over that subject.' Which they did; and after dinner he took one of them upon his knee and fondled her for half an hour together."—(*Croker's 'Boswell,'* vol. iii., p. 133).

14½ in. by 14½ in.

*Exhibited at Burlington House, 1883**Agnew*

W. HOLMAN HUNT, 1851-61.

395- 19 THE HIRELING SHEPHERD

The small Picture

12 in. by 18 in.

Agnew

G. MASON, A.R.A.

650 20 THE CAST SHOE

12½ in. by 20 in.

*Engraved**Exhibited at the Royal Academy**Exhibited at the Paris Universal Exhibition, 1878**do*

G. MASON, A.R.A.

50 21 HORSES DRINKING AT A ROMAN FOUNTAIN

15¾ in. by 30½ in.

*Painted in Rome**Bought from the Family.**M Leach*

G. MASON, A.R.A.

- 70 22 A GIRL DRIVING CALVES
12 in. by 22 in.

P. J. Colman

J. C. HOOK, R.A.

- 20 23 "LUFF, BOY!"
24 in. by 37 in.
Engraved

Graham

Exhibited at the Royal Academy, 1859

SIR F. LEIGHTON, P.R.A.

- 50 24 THE DAPHNEPHORIA

Tooth

A triumphal procession held every ninth year at Thebes in honour of Apollo and to commemorate a victory of the Thebans over the Aeolians of Arne. Its name was derived from the laurel branches carried by those who took part in the festival; the laurel, or more properly the bay, being sacred to Apollo. The procession is led by a youthful priest, called the Daphnephoros (the laurel bearer); before him a boy, his kinsman, bears a symbolic standard, called the *Kops*, and indicating the sun, moon and stars. Behind the Daphnephoros three lads carry a trophy of golden armour; they are followed by the choir of Theban maidens, who, crowned with laurels and each bearing a laurel branch, sing the hymn to Apollo under the direction of the chorus leader. The procession is closed by boys carrying votive tripods. In the valley below is seen the town of Thebes.—See *Proclus*, 'Chrestomath.'

5 ft. 7 in. by 17 ft.

*Engraved**Exhibited at the Royal Academy, 1876**Exhibited at the Jubilee Exhibition, Manchester, 1887*

SIR FREDERICK LEIGHTON, P.R.A.

- 80 25 SISTERS

30 in. by 15 in.

*Painted for Mr. Hodyson**Exhibited at the Royal Academy, 1862*

Graham

SIR FREDERICK LEIGHTON, P.R.A., 1861.

60 26 " LIEDER OHNE WORTE "

40 in. by 25 in.

Painted for Mr. Hodgson

Exhibited at the Royal Academy, 1861

Clifford

JOHN CONSTABLE, R.A.

-50 27 HAMPSTEAD HEATH

26 in. by 39 in.

Dated 1830

From the Collection of Captain Constable (late Indian Navy)

Exhibited at the International Exhibition, 1862

Exhibited at Burlington House, 1871

Wallis

DECAMPS.

60 28 A FARM YARD

32 in. by 39 in.

Buck & Co.

N. LARGILLIERE.

245- 29 MISS FRANCES STEWART, Cousin of Charles II.

50 in. by 40 in.

From the Collection of A. Barker, Esq.

Donaldson

SIR G. KNELLER.

48 30 HENRIETTA DOWAGER DUCHESS OF BOLTON, third wife of Charles,
second Duke, who died January 21, 1721-2. She was the
natural daughter of James, Duke of Monmouth, and died
February 27, 1729-30

18 in. by 36 in.

Agnew

TITIAN.

- 110 31 THE ADORATION OF THE MAGI *Lesser*
 54½ in. by 87 in.
From the Collection of B. West, P.R.A.
From the Collection of Samuel Rogers, Esq.
From the Collection of H. A. J. Munro, Esq.
-

The Property of
The Rt. Hon. LORD REVELSTOKE.

J. HEYERMANS.

- 30 32 THE VILLAGE SHOP *Bond*
 33 in. by 48 in.

E. FRÈRE, 1866.

- 60 33 WINTER *Vokins*
 9 in. by 7 in.

E. FRÈRE.

- 50 34 BREAKFAST *Gooden*
 10 in. by 6 in.

E. W. COOKE, R.A.

- 45- 35 A FRENCH COAST SCENE, with fishing-boats and figures *do*

L. NORMAN NERUDA.

- 26 36 THE POSY *Crisp*
 26 in. by 17 in.

G. MASON, A.R.A.

30 37 BLACKBERRY GATHERING

40 in. by 22½ in.

Exhibited at the Royal Academy, 1871

In Lean

SIR F. LEIGHTON, P.R.A.

370 38 GOLDEN HOURS

Exhibited at the Royal Academy, 1864

24 x 40

Agnew

J. HOPNER, R.A.

400 39 PORTRAIT OF A LADY

30 x 24

Clayton

T. GAINSBOROUGH, R.A.

400 40 MRS. DRUMMOND, eldest daughter of the Hon. Thomas Harley, and wife of George Drummond, Esq., of Stanmore: three-quarter length, leaning her head on her left hand, her right hand holding a drawing, in low cut pearl-grey dress with pearls, powdered hair falling in ringlets over her shoulders, busts and a crayon lie beside, curtain background

49½ in. by 39½ in.

Exhibited at Burlington House, 1890

Agnew

T. GAINSBOROUGH, R.A.

300 41 LADY RODNEY, wife of the famous Admiral, the first Lord Rodney: three-quarter length, in low cut blue dress, both hands in front of her, the left holding a gauze scarf, powdered hair, dark background

49 in. by 39½ in.

Exhibited at Burlington House, 1890

do

MORLAND.

- 70 42 THE BLEACHING GROUNDS
29 in. by 42½ in.

Shepherd

SIR J. REYNOLDS.

- 40 43 PORTRAIT OF THE COUNTESS OF WALDEGRAVE
30 in. by 25 in.

Donaldson

GAINSBOROUGH.

- 48 44 PORTRAIT OF GARRICK
35½ in. by 26½ in.

Crisp

RILEY.

- 26 45 PORTRAIT OF JOHN MILTON, at the age of 18
25 in. by 20 in.

Bewcher

R. WALKER.

- 16 46 SIR HUGH CHOLMONDELEY, in armour, with lace collar
30 in. by 24½ in.

Colnaghi

R. MENGES.

- 52 47 PORTRAIT OF HAYDN, the composer
24½ in. by 20 in.

Nallis

JANSENS.

- 28 48 A GENTLEMAN, in black dress and ruff

*do**27 x 20*

MIGNARD.

30 49 THE ROYAL NURSE, with sliding panel representing the royal infant asleep and awake *C. J. A.*

30 in. by 39½ in.

VANDYCK.

50 50 COUNT TILLEY, Commander of the Imperialists at the Storming of Prague *Donaldson*

48 in. by 36 in.

RUBENS.

50 51 ELIZABETH BRANDT, the artist's first wife, in black dress, with ruff and white cuffs, with gold brocade corset, with chain and cross, and jewelled band in her hair, bracelets and rings of coloured stones, seated in an armchair, on which is inscribed "Æt. 30, a° 1622": an altar is seen in the background, over which is a picture of the Holy Family, with St. John and the Lamb, by Rubens *Wallis*

47 in. by 36 in.

From Hamilton Palace 1750 *GP*

RUBENS.

20 52 PORTRAIT OF HIS WIFE *M. Colnag*

38½ in. by 29 in.

From Stowe

From the Wynn-Ellis Collection

MEMLING.

- 100 53 THE VIRGIN ENTHRONED WITH THE INFANT SAVIOUR IN HER ARMS, under an arcade, an angel kneeling in front presenting a fruit, and holding a viol in his left hand, another angel approaching on the left playing on a musical instrument, a landscape with a church and other buildings in the background, seen through an open arch, infant angels standing on columns at the sides suspending a wreath of foliage and fruits, and surmounted by subjects of Abraham's Sacrifice and the Decollation Ag

25 $\frac{1}{4}$ in. by 18 $\frac{3}{4}$ in.

From the Collection of J. P. Deering, R.A.

From the Collection of T. Gandy, Esq.

From the Collection of Hanbury Williams, Esq.

EARLY FLEMISH.

- 80 54 A PAIR OF WINGS OF A TRIPTYCH, each painted with two royal donors kneeling, attended by the Saviour and a patron saint, with shields of arms in gold and colours above, painted with the representation of Christ mocked, on the reverse H. L.

34 in. by 19 in.

From the Marquis of Exeter's Collection

JANET.

- 15 $\frac{1}{2}$ 55 CHARLES IX. OF FRANCE, in ruff, black dress, and cap with feather and band of jewels, and gold chain with jewels to match Si. T. Linc

12 in. by 8 $\frac{3}{4}$ in.

From the Marquis of Exeter's Collection

MASSINI.

- 135- 56 THE ARCHDUCHESS ISABELLA CLARA EUGENIA, in white satin dress embroidered with gold and red flowers, enriched with pearls, a diamond cross, pearl necklace, and elaborate lace ruff, and head-dress of rich jewels and pearls—
on copper
 11 $\frac{3}{4}$ in. by 9 in.
From the Marquis of Exeter's Collection 150-4p *Oba*

LUCAS CRANACH.

- 46 57 PORTRAITS OF TWO ELECTORS OF SAXONY, in black caps and dresses trimmed with fur
 30 in. by 20 in.
Signed with painter's monogram, and date 1542
From the Collection of Mr. Francis, of the British Museum *Lau*

G. ROMANO.

- 12 58 PORTRAIT OF ALEXANDER BORGIA, Duke of Valencia, in armour, his right hand resting on a helmet
 53 in. by 40 in.
From the Hamilton Palace Collection
Engraved *gra*

G. MARATTI.

- 13 59 THE VIRGIN, in prayer
Sasso Ferrato *Maj Bo*

LINGELBACH.

- 14 60 A SEAPORT IN THE LEVANT, with shipping and figures
 33 in. by 50 in. *Russe*

FINIS.

5567 1/2

London: Printed by WILLIAM CLOWES & SONS, Limited, Stamford Street and Charing Cross.

845.17.6



LIBRARY
GETTY CENTER



GETTY CENTER LIBRARY



3 3125 00881 9365

